

# KOA

SUSPENSION  
MAINTENANCE FREE

The **solution**  
to keep up with the times.





# K.A

S U S P E N S I O N  
M A I N T E N A N C E F R E E

- > No greasing
- > Maintenance free
- > Compatible with all types of agricultural machinery
- > Technological innovations
- > Greater robustness
- > Weight reduction

## The **solution**

to keep up with the times.



> Available as a kit or already assembled including axles ready for installation on the vehicle chassis.

**ADR**  
S Y S T E M



KIT\_KA

# 1/2 TANDEM\_KA

## Why a new suspension series?

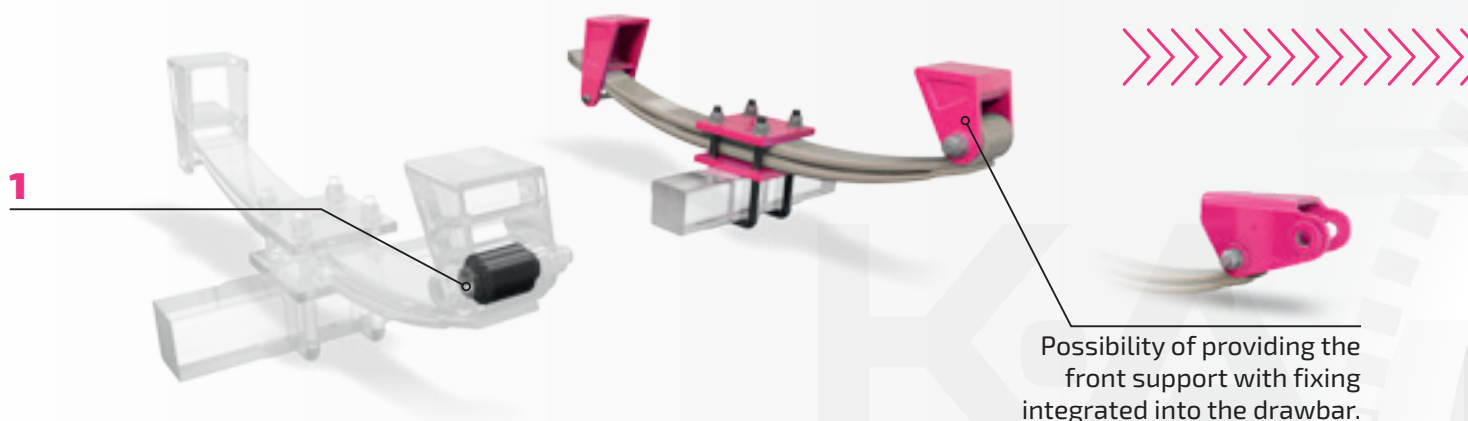
Because the market demands:

- ever-faster speeds of use,
- use of lighter materials that allow high and safe performance,
- reduced or zero maintenance costs and downtime,
- stronger suspensions, well adapted to all types of terrain and easy to install.

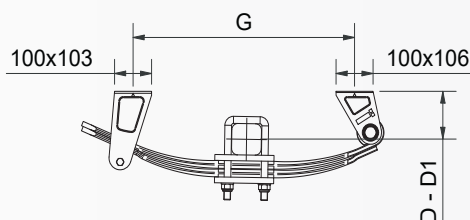
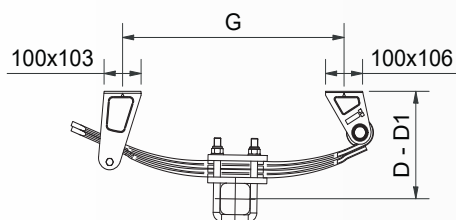
The new generation of KA MECHANICAL SUSPENSIONS with capacities from 4 tonnes to 16 tonnes increases the strength of suspensions and incorporates the technological innovations demanded by the market.

Is maintenance a problem for you? **ADR eliminates it!**

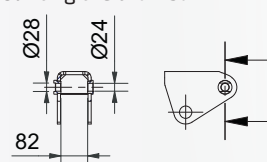
## No greasing with the 'new generation KA Suspension'



## TECHNICAL FEATURES 1/2 TANDEM



Detail of the front support for mounting the drawbar.



	C	E	G	H	Q	D	D1	LF	EA	CD
	kg	mm	mm	mm	mm	mm	mm		mm	
<b>STANDARD</b>	4 000	-	530	-	70	242	227	RP80G416	-	KA1000C5N0724
	5 000				80	247	232			KA1000C5N0825
	6 000 7 000	-	600	-	70	270	256	RP80R412	-	KA1000C1N0727
					80	275	261			KA1000C1N0828
					90	280	266			KA1000C1N0928
	7 000 8 000	-	810	-	70	280	256	RP80G413	-	KA1000C3N0728
80					285	261	KA1000C3N0829			
90					290	266	KA1000C3N0929			
<b>LOWERED</b>	4 000	-	530	-	70	110	95	RP80G416	-	KA1000C5R0711
	5 000				80	105	90			KA1000C5R0811
	6 000 7 000	-	600	-	70	128	114	RP80G412	-	KA1000C1R0713
					80	123	109			KA1000C1R0812
					90	118	104			KA1000C1R0912
	7 000 8 000	-	810	-	70	129	105	RP80G413	-	KA1000C3R0713
					80	124	100			KA1000C3R0812
					90	119	95			KA1000C3R0912

C = Load capacity, E = Wheelbase, G = Bearing distance 1, H = Bearing distance 2, Q = Axle type, D = Height when empty, D1 = Height under load, LF = Type of leaf spring, EA = Rocker length, CD = Order no.



## FEATURES AND ADVANTAGES:

- **1 No routine maintenance.**

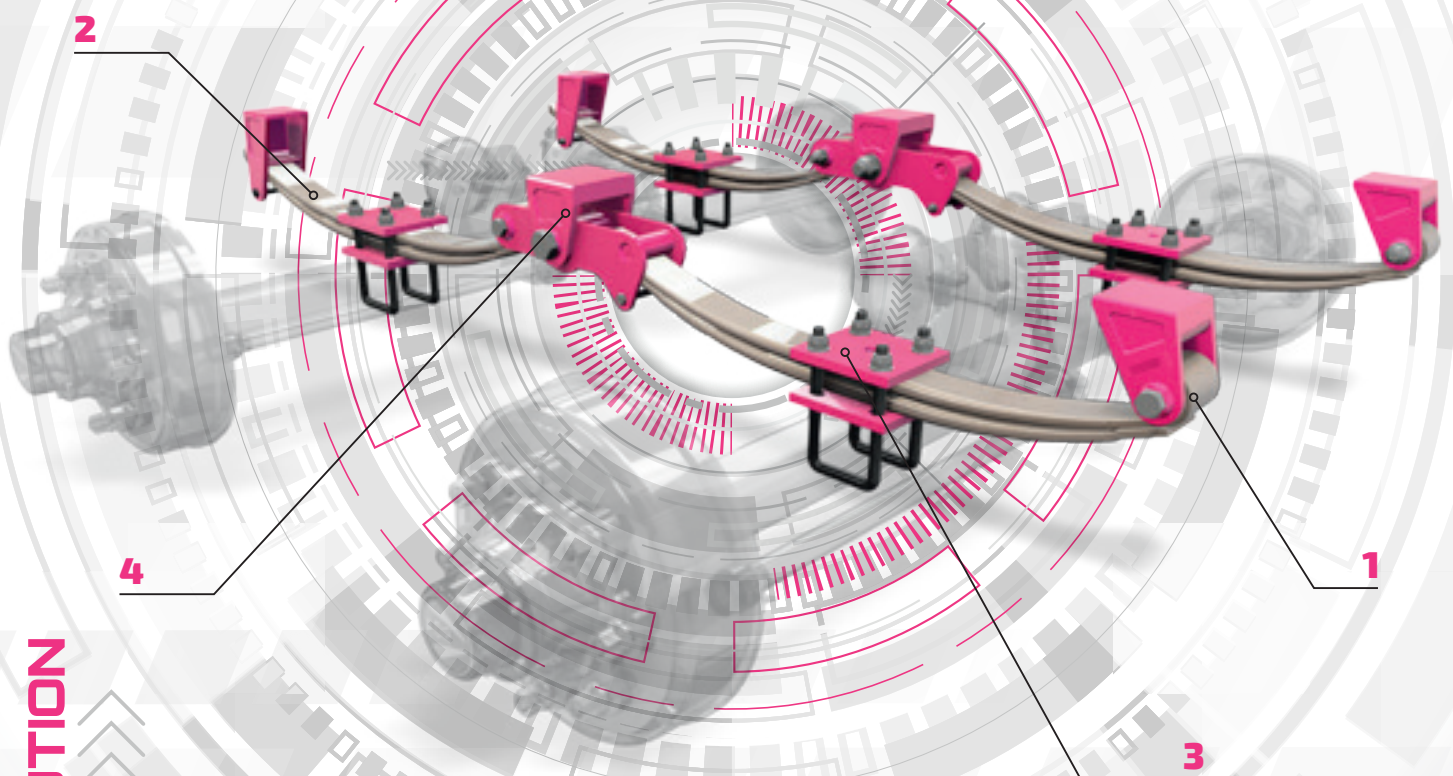
The presence of elastic bushings on the suspension pivots is the real key to the product. The market increasingly demands the optimisation of work output, reducing costs and downtime required for the maintenance of agricultural machinery.

- **2 Parabolic leaf springs**

They provide - with the same elasticity - a significant reduction in weight and extreme stability of the agricultural machine, even when used on rough and difficult terrain. **In brief: - weight + load**

- **3 The axle anchorage** is consistent with the evolution of ADR products. It is robust, compatible with the ADR range of axle housings and meets the demands of the market.

- **4 High precision and very robust cast steel structure**, which is well suited to high stresses. Also, the small deformations during operation ensure stable machine behaviour under all conditions of use, even the most severe. Please note the absence of welds. This eliminates any potential breakage points. The castings make it possible to obtain unique geometries with a significant weight reduction.



EVOLUTION



**KA\_SUSPENSION**  
**MAINTENANCE FREE**

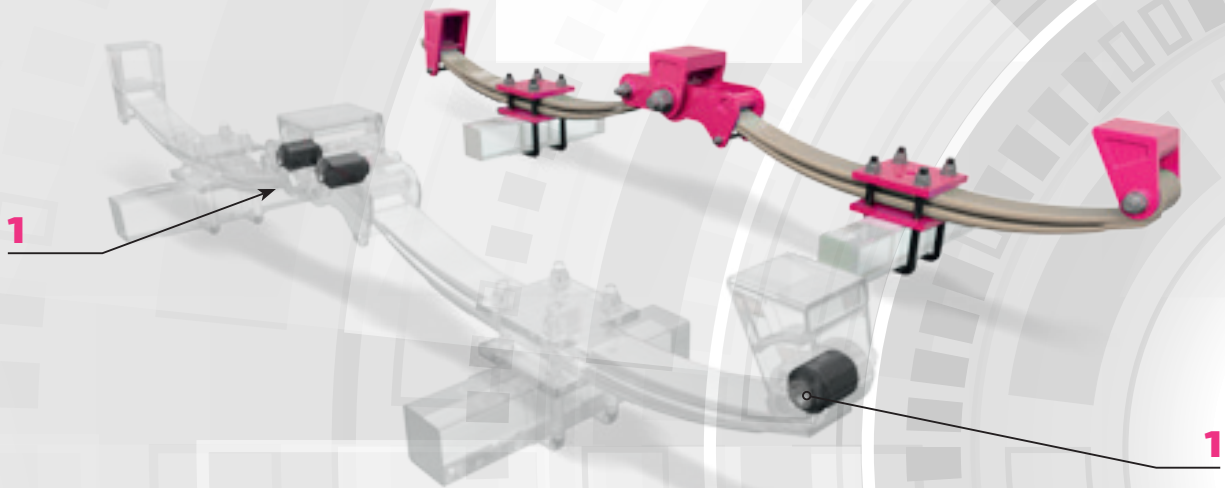
# TANDEM\_LKA

All the advantages derive from the design and testing experience of **ADR technicians** at our **R&D laboratories** and in the field - thanks to the cooperation and support of our customers.

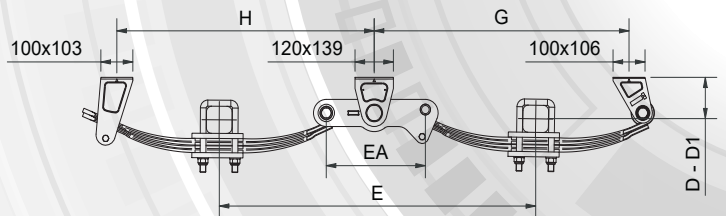
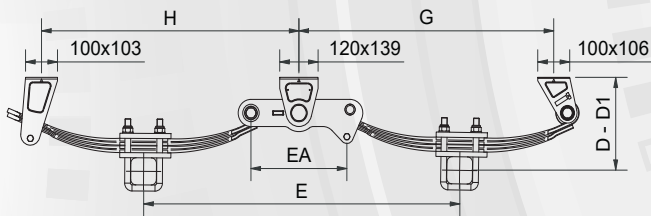
The **elastic elements of the suspension** - a decisive and crucial element - from the automotive world, eliminate maintenance and ensure vehicle stability even at high speeds. Please also note that the elasticity of these components reduces and dampens the oscillations of the agricultural trailer.

### Advantages:

- Greater robustness
- Weight reduction
- High stability of the components made, allowing work in extreme conditions of use.



## TANDEM TECHNICAL FEATURES



	C	E	G	H	Q	D	D1	LF	EA	CD
	kg	mm	mm	mm	mm	mm	mm		mm	
<b>STANDARD</b>	8 000 10 000	910	717	725	70	242	227	RP80G416	310	KA2091C5N0724
					80	247	232			KA2091C5N0825
		1060	787	795	70	242	227		470	KA2106C5N0724
					80	247	232			KA2106C5N0825
	12 000 14 000	990	797	805	80	275	261	RP80G412	310	KA2099C1N0828
					90	280	266			KA2099C1N0928
		1150	877	885	80	275	261		470	KA2115C1N0828
					90	280	266			KA2115C1N0828
	14 000 16 000	1200	1007	1015	90	290	266	RP80G413	310	KA2121C3N0929
					100	300	276			KA2121C3N1030
		1350	1077	1085	90	290	266		470	KA2135C3N0929
					100	300	276			KA2135C3N1030
<b>LOWERED</b>	8 000 10 000	910	717	725	70	110	95	RP80G416	310	KA2091C5R0711
					80	105	90			KA2091C5R0811
	12 000 14 000	990	797	805	80	123	109	RP80G412	310	KA2099C1R0812
					90	118	104			KA2099C1R0912
	14 000 16 000	1200	1007	1015	80	124	100	RP80G413	310	KA2121C3R0812
					90	119	95			KA2121C3R0912

C = Load capacity, E = Wheelbase, G = Bearing distance 1, H = Bearing distance 2, Q = Axle type, D = Height when empty, D1 = Height under load, LF = Type of leaf spring, EA = Rocker length, CD = Order no.



**A.D.R. S.p.A.**

Via Antonio Maria Ceriani, 96 - 21040 Uboldo (VA) ITALY  
 Tel. +39 02 96 17 11 - Fax +39 02 96 17 14 20  
 adr@adraxles.com - [www.adraxles.com](http://www.adraxles.com)

**COLAERT ESSIEUX**

11bis Route Nationale 59189 Steenbecque FRANCE  
 Tel. +33 (0)3 28 43 85 50 - Fax +33 (0)3 28 43 68 63  
 commercial@colaertessieux.fr - [www.colaertessieux.fr](http://www.colaertessieux.fr)

**ADR Polska**

ul. Bieszczadzka 5, 38-540 Zagórz, POLAND  
 Tel. +48 13 46 89 333 - Fax +48 13 46 89 368  
 atw@atwsystem.pl - [www.adrosie.pl](http://www.adrosie.pl)

**ADR UK - Tyremart Agricultural Ltd**

Main Road, Long Bennington, Newark, Notts, NG235DJ GREAT BRITAIN  
 Tel. +44 1400 28 38 20 - Fax +44 1400 28 31 37  
 info@tyremartagri.co.uk - [www.adraxles.com](http://www.adraxles.com)

**ADR GEPLASMETAL S.L.**

Pol. Malpica c/ J n°1 - 50.016 Zaragoza ESPAÑA  
 Tel. +34 976 46 52 54 - Fax. +34 976 57 11 32  
 info@adrgeplasmetal.com - [www.adrgeplasmetal.com](http://www.adrgeplasmetal.com)

**ADR Axles USA Inc.**

415 N 17th CT 51334, Estherville Iowa USA  
 Tel. +1 712 20 99 326  
 adr@adraxlesusa.us - [www.adraxles.com](http://www.adraxles.com)

**OMEGA Drives Inc.**

7A-845 Lagimodiere Blvd. Winnipeg, Manitoba R2J 3M2 CANADA  
 Tel. +1 204 453 24 77 - Fax +1 204 453 24 78  
 info@omegadrives.com - [www.omegadrives.com](http://www.omegadrives.com)

**ADR EIXOS BRASIL Ltda**

Rua Nelson Colela, 105 Ribeirão Preto SP BRASIL  
 CEP: 14072-068  
 Tel. +55 16 3617.3079  
 info@adreixos.com.br - [www.adraxles.com.br](http://www.adraxles.com.br)

**ADR China - Qingdao ADR Axles Manufacturing Co., Ltd.**

Lingang Road No.2468, Huangdao District, Qingdao City,  
 Shandong Province - Post Code 266400 CHINA  
 Tel. +86 532 86 19 66 36 - Fax +86 532 86 19 65 01  
 info@adrsystem.cn - [www.adraxles.cn](http://www.adraxles.cn)

**ADR Axles India Pvt. Ltd.**

Gat No.512, Lavasa Road, At Village Kasar Amboli, Taluka Mulshi,  
 MIDC Pirangut, Pune - 412108, State of Maharashtra - INDIA  
 Tel. +919 89 755 0 80 - info@adraxles.in - [www.adraxles.in](http://www.adraxles.in)

**ADR Australia Pty Ltd**

1 / 11 Warrior Place, St. Marys N.S.W 2760 - AUSTRALIA  
 Tel. 02 96 23 05 12 - Fax 02 96 23 05 05  
 admin@adraust.com.au - [www.adraust.com.au](http://www.adraust.com.au)

**ADR**group[www.adraxles.com](http://www.adraxles.com)